

Gordie Howe International Bridge

MOMENTUM

issued by: Windsor-Detroit Bridge Authority



PONT INTERNATIONAL
**GORDIE
HOWE**
INTERNATIONAL BRIDGE

The Gordie Howe International Bridge project between Windsor, Ontario and Detroit, Michigan will help move goods and people more efficiently at this important trade gateway. Managed by Windsor-Detroit Bridge Authority (WDBA) and working in collaboration with the State of Michigan, the project is being delivered through a public-private partnership (P3) which will see Bridging North America design, build, finance, operate and maintain the bridge.

IN THIS EDITION:

- What is a Pier Table?
- People Profile
- From Road Bridge to Pedestrian Bridge
- Back, Side and Approach Spans
- In the Community
- Stay Out and Stay Safe
- Canadian Observation Area Moves Closer to Construction
- The Final Segment
- Kid Zone

WHAT IS A PIER TABLE?

Work on the Gordie Howe International Bridge is more than just bridge towers and buildings. Construction on the bridge's pier table, which will support the future road deck has also begun. The pier table has been described as the "skeleton" of the road deck, and is constructed of steel and concrete precast panels.

The pier table is a series of edge girders and floor beams. Each edge girder is 50 metres/164 feet long and 40 tonnes, and each floor beam is approximately 25 tonnes. To put the pier table in place, work starts on the ground. Edge girders are pre-assembled along with falsework, which consist of vertical support columns made of structural steel sections such as I-beams and hollow structural steel sections that support a steel and wooden soffit. Cranes raise the falsework that rests on large concrete piers. Edge girders are then placed on the soffit which is part of the falsework. The soffit support will remain in place and suspended from the corbels through high tensile steel bars. Now that the pier table is installed, the side span work is underway.

CONTACT US



Have a question about the Gordie Howe International Bridge project?

Call us toll-free at **1-844-322-1773**

Email us at info@wdbridge.com

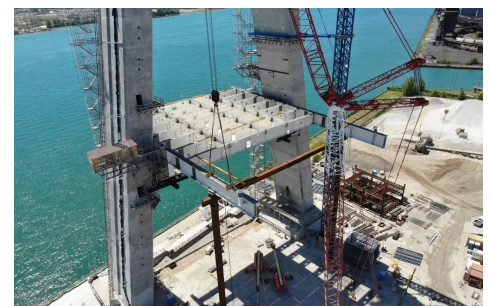
Message us through any of the project **social media accounts**.

Sandwich Community Office at **3201 Sandwich St.***

Southwest Detroit Community Office at **7744 W Vernor Hwy.***

***Community Offices are currently closed due to Covid-19.**

Read more about all project updates on GordieHoweInternationalBridge.com



PEOPLE PROFILE

MEET LINDSAY BENNETT

Lindsay is an Environmental Compliance Specialist for Windsor-Detroit Bridge Authority. She attended Seneca College, Lethbridge College, and Royal Roads University and holds a Diploma in Environmental Management, Post-Diploma Certificate in Fish and Wildlife Technology and BSc in Environmental Practice. Lindsay has lived in the area since 2013 and did not know much about the project before applying for her current position towards the end of 2016. She has always been interested in helping to protect wildlife and wildlife habitats.

Q. What type of work are you doing on the project?

I oversee and monitor compliance to ensure that the project fulfills various environmental requirements. In this role, I assess potential issues that may arise due to construction and work with Bridging North America to reduce risk of harmful impacts to the environment through mitigation and monitoring.

Q. What is the most rewarding part of working on the project?

I enjoy assessing risks to the environment and working with people to overcome challenges related to construction. Working collaboratively to improve or develop processes that strengthen environmental protection measures on construction projects is rewarding.

Q. What do you wish other people knew about the project?

Environmental monitoring and mitigation on the project is contributing to research on endangered species unique to this area. This could lead to more research to learn more about species at risk and recovery efforts.



LINDSAY BENNETT

Environmental Compliance Specialist – Windsor-Detroit Bridge Authority

FROM ROAD BRIDGE TO PEDESTRIAN BRIDGE

As the Southwest Detroit community has noticed, Junction Street between the northbound and southbound I-75 Service Drives was closed and demolished during the weekend of July 8, 2022. As a result of consultation and discussions with the City of Detroit, the road bridge will be reconstructed as a pedestrian bridge. This location replaces the pedestrian bridge formerly located at Morrell Street and will allow community access to Community Health and Social Services Center (CHASS). The Junction pedestrian bridge structure will extend over both service drives and safely transition to meet the sidewalk at the corner of Junction Street and Fort Street. To accommodate this design, Junction Street will be converted to a one-way northbound street between the Northbound Service Drive and Fort Street. Reconstruction of the pedestrian bridge will be completed in 2023.



Facing west on Northbound Service Drive



View from Southbound Service Drive



South View from Junction



Facing west on Junction Street

BACK, SIDE, AND APPROACH SPANS

Crews are hard at work constructing the back spans, side spans, and approach spans that will connect the Gordie Howe International Bridge to the largest ports of entry on the Canada-US border. Construction of the piers for the side spans started in 2019, with six pier columns in each country. The pier columns are made of steel and concrete.

Work on the back span is now underway, with nine pier columns in each country. Temporary falsework piers are installed to allow for construction to progress on the side span road deck. Approach span construction started in late 2021 and construction of the approach span piers will be completed by 2024. Learn more about the spans, their measurements and composition on our website.



Side span piers and anchor piers



Temporary falsework for the back span



Foundations for the approach bridge spans

IN THE COMMUNITY

MEET A MACHINE

On June 11, 2022, WFCU Centre held their annual Meet-A-Machine event hosted by the City of Windsor. Kids of all ages had a chance to get up close to construction equipment, emergency vehicles, and many more machines. Attendees were excited to learn about some of the machines being used to construct the Gordie Howe International Bridge. Project staff handed out children's construction hats and activity sheets to give kids the chance to feel like a construction worker for the day.



COMMUNITY BENEFITS YEAR-IN-REVIEW REPORT

Over the past year, the Gordie Howe International Bridge project team has worked with 50 agencies, associations, and community representatives to deliver the Community Benefits Plan workforce and neighbourhood improvement initiatives, including the addition of eight new delivery partners that participated in this important work in 2021. Since the Plan's 2019 launch, new partnerships, programs, and community investments have benefitted local residents, businesses, and organizations within the host communities and beyond. The project team is pleased to share comprehensive details of the Community Benefit Plan's progress through the 2021-2022 Community Benefits Year-in-Review Report. Visit our website to read the report and to learn more about the positive impacts that have been generated.

KID ZONE FUN

Summer vacation isn't over yet! A fun and educational way to keep kids cool is to explore the Kid Construction Zone page on our website. It's filled with material about the Gordie Howe International Bridge project that will interest both the young and the young at heart. There's games, activities, quizzes, videos and more.



2022 COMMUNITY ORGANIZATION INVESTMENT RECIPIENTS

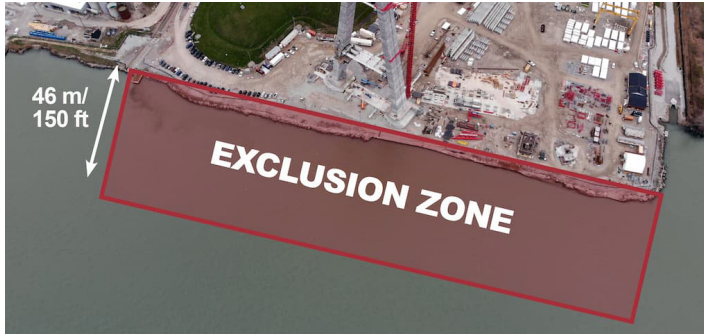
The Gordie Howe International Bridge project team announced nine recipients of the \$100,000 (CDN) 2022 Community Organization Investment initiative that is part of the project Community Benefits Plan. Five Windsor and four Detroit initiatives received funding:

- Look Again! Outside:
Organization: Art Windsor-Essex
- Caring Hearts Food Bank
Organization: Society of Saint Vincent de Paul – Windsor Essex Central Council
- Green Space Reclamation/Jesuit Pear Grove Conservation
Organization: Les Amis Duff-Bâby
- Outdoor Basketball Hoops
Organization: Sandwich Teen Action Group
- BBBS Big Sandwich Afterschool Program
Organization: Big Brothers Big Sisters Windsor Essex
- Creative Placemaking in Southwest Detroit
Organization: Urban Neighborhood Initiatives
- Fort Street Bridge Park Multi-Purpose Trailhead Phase II
Organization: Friends of the Rouge
- Fiesta Detroit Cinco De Mayo Festival:
Organization: We are Culture Creators
- Livernois 2 Clark Neighborhood Association:
Organization: Livernois 2 Clark Neighbor Connections

Through the Community Organization Investment initiative, \$100,000 (CDN) in funding will be available each year from 2020-2024. The call for applications is expected to open in late fall of each year and funding will be released to successful applicants the following July. This initiative is being delivered as part of the Neighbourhood Infrastructure Strategy of the Gordie Howe International Bridge Community Benefits Plan.

STAY OUT AND STAY SAFE

A 46-metre/150-foot exclusion zone in the Detroit River along the Gordie Howe International Bridge project's Canadian bridge site shoreline is currently in place to keep boaters safe and away from construction activities. Those who enter the exclusion zone risk fines up to \$500. Thank you for steering clear of the area.

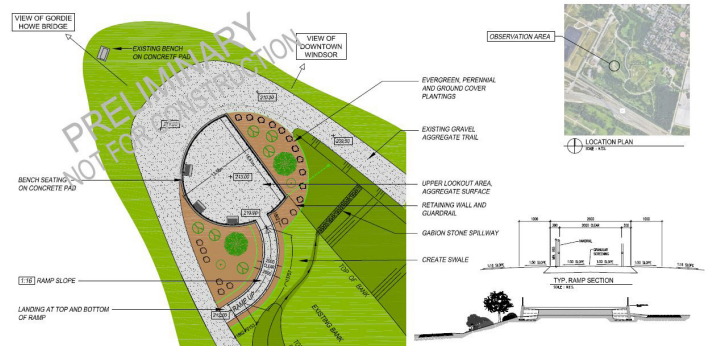


THE FINAL SEGMENT

For those following construction, the joining of the bridge's lower pylons/tower legs is old news. While it may look like work has paused, the process to transition from the lower pylon to the pylon head is underway. This involves modifications to the jump form systems and concrete pours to construct the upper cross beam. Concrete pours are currently underway, with approximately 182 cubic metres/238 cubic yards of concrete to be used in two separate pours for each tower, first for the soffit slab and then the vertical walls. Once the concrete pours are complete, work will begin on the pylon head, the final segment of the tower. Starting this month, you should see the towers continue to rise as one. Towers are anticipated to reach full height by the end of the year.

CANADIAN OBSERVATION AREA MOVES CLOSER TO CONSTRUCTION

Have you wanted to watch the construction progress of the Gordie Howe International Bridge project from a safe vantage point? The Community Benefits Plan includes a commitment to construct an Observation Area in Malden Park in Windsor that will provide an attractive, safe location for residents, students, and tourists to view the construction. The area will include a raised viewing area with railings, benches, and wayfinding signage. The project team is currently working through permitting, environmental and design considerations. To minimize barriers for people with disabilities, the Gordie Howe International Bridge project team recently sought feedback on the accessibility of Malden Park Observation Area. Participants were able to comment on the preliminary designs of the observation area, which will help inform the final design. Construction is anticipated to begin in fall 2022.



KID ZONE

Connect the dots to uncover the mystery image.

Hint: This piece of heavy equipment is used on the construction site of the Gordie Howe International Bridge. Do you know what it is?

