

## CONSTRUCTION UPDATE: FALL/WINTER 2023



*US bridge tower construction (top) and Canadian bridge tower construction (bottom).*



### BRIDGE WORK

The US bridge tower reached its full height of 220 metres/722 feet and the last concrete pour on the Canadian bridge tower is currently underway.

The Gordie Howe International Bridge will include 216 stay cables – 108 connecting from each tower to the bridge and road deck – when completed. To date, over 74 have been installed on the Canadian side and 76 on the US side.

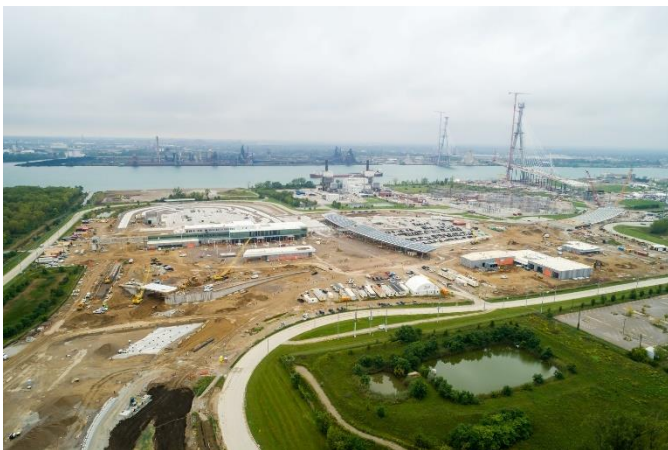
Half of the bridge deck construction is complete as workers continue with steel girder and floor beam installation and concrete pre-cast panel placement. The deck over the Detroit River is approximately 268 metres/879 feet from the centre of the Canadian tower and 255 metres/836 feet from the centre of the US tower.

Construction continues simultaneously on the road deck extending inland connecting to the Ports of Entry in Canada and the US.

### PORTS OF ENTRY

#### CANADIAN PORT OF ENTRY

At the Canadian Port of Entry (POE), construction on all 11 structures is occurring. Activities include roofing, masonry work, installation of equipment and underground utilities. Installation of a green roof feature has also started on one of the POE buildings.



*Canadian POE construction.*

Construction of the 24 inspection lanes and 16 toll booths is advancing. Framing and final touchups are taking place on both canopies.

Beam erection and deck construction are complete for the return to US overpass bridge in the POE, and construction of the barrier wall and permanent fencing along the perimeter of the site is ongoing.

Paving and grading work is taking place throughout the site as well as placement of fill to support the bridge approach.

## US PORT OF ENTRY

Construction activities are advancing at the US Port of Entry with all 13 buildings and structures taking shape. Drywall, doors, ceiling work and equipment installations are taking place within some buildings.

Construction of the 36 inspection lanes is well underway with roofing and structural steel installations taking place.

Paving and grading work is occurring throughout the site as well as stormwater management pond work and underground utility installation.



US POE construction.

Construction traffic is using designated haul routes to minimize community impacts, traffic congestion and wear and tear on existing infrastructure while maximizing public and construction safety. Routes for construction traffic south of I-75 include M-85 (Fort St), Green St (from Fort to Jefferson Ave), Livernois Ave (from I-75 to CSX railroad), Campbell Street (from Fort Street to Jefferson Avenue), Jefferson Avenue (from Campbell to the west City limits) and any permanently closed roadways.

## MICHIGAN INTERCHANGE (I-75) WORK



Road Bridges ■ Access Ramps ■ Pedestrian Bridges ■

### ROAD AND PEDESTRIAN BRIDGE CONSTRUCTION

All four road bridges are complete and open to traffic. All five pedestrian bridges are currently under construction.

Girder installations on all five pedestrian bridges are complete and crews are preparing for construction tie ins, and pile driving work is taking place at Junction Avenue.

### SIPHON CONSTRUCTION

Siphon installation is underway along portions of I-75 to help facilitate future drainage in the area.

Siphon construction is taking place on Dagoon Street, Morell Street and Ferdinand Street with sheet piling and excavation work.



Michigan Interchange construction.



## RAMP CONSTRUCTION

The new ramps that will connect I-75 to the US POE are taking shape. These new structures are located between Campbell Street and Livernois Avenue and will provide an overpass above Fort Street and I-75 lanes and on/off ramps. Ramp construction is anticipated to be complete in 2024.

All ramps shown in the design rendering below are currently under construction in different stages.

Activities include:

- girder installation
- rebar installation and concrete deck pours
- foundational work, including construction of footings and piers.



*Design rendering of I-75 and US POE connector ramps*

## LOCAL ROAD IMPROVEMENTS

Michigan Interchange activities include associated local road improvements. These improvements include:

Reconstruction and realignment of:

- Green Street from I-75 to W. Jefferson Avenue, including a boulevard from the Norfolk Southern Railway to W. Jefferson Avenue
- Campbell Street from I-75 to W. Jefferson Avenue, including a boulevard from the Norfolk Southern Railway to W. Jefferson Avenue
- Livernois Avenue from I-75 to the dead end, with construction a cul-de-sac and conversion to 2-way traffic (from Fort Steet south).

Reconstruction and reconfiguration of the following intersections:

- West End Street and Fort Street
- West End Street and W. Jefferson Avenue (complete)
- Dearborn Street and W. Jefferson Avenue
- Clark Street and Fort Street
- Clark Street and W. Jefferson Avenue.

Road resurfacing will take place on:

- East and westbound I-75 Service Drives from West End Street to Clark Street
- Fort Street from Junction Avenue to Green Street
- Cavalry Street: construction of a new cul-de-sac at the southern terminus
- W. Jefferson Avenue from Campbell Street to West End Street.

Work is at various stages on Jefferson Avenue, Livernois Avenue, Fort Street and Campbell Street.

## CURRENT TRAFFIC PATTERNS

- Service Drives are closed or reduced to single lanes in areas between Springwells Street and Clark Street:
- Livernois Street is open to two-way traffic between Fort Street and West Lafayette Street and one-way traffic north of West Lafayette Street.
- The primary detour route for motorists includes the use of the Springwells Street, Green Street, Livernois Avenue and Clark Street road bridges to cross over I-75.
- Travelers wishing to access I-75 northbound or southbound will detour to West Vernor Highway or Fort Street depending on directional travel needs.



For more information about the Gordie Howe International Bridge project visit [www.GordieHoweInternationalBridge.com](http://www.GordieHoweInternationalBridge.com) or call 1-844-322-1773. Follow us on Twitter at [www.twitter.com/GordieHoweBrg](https://www.twitter.com/GordieHoweBrg), like us on Facebook at [www.facebook.com/GordieHoweBridge](https://www.facebook.com/GordieHoweBridge) and connect with us on LinkedIn at [www.linkedin.com/company/wdba-apwd](https://www.linkedin.com/company/wdba-apwd)